

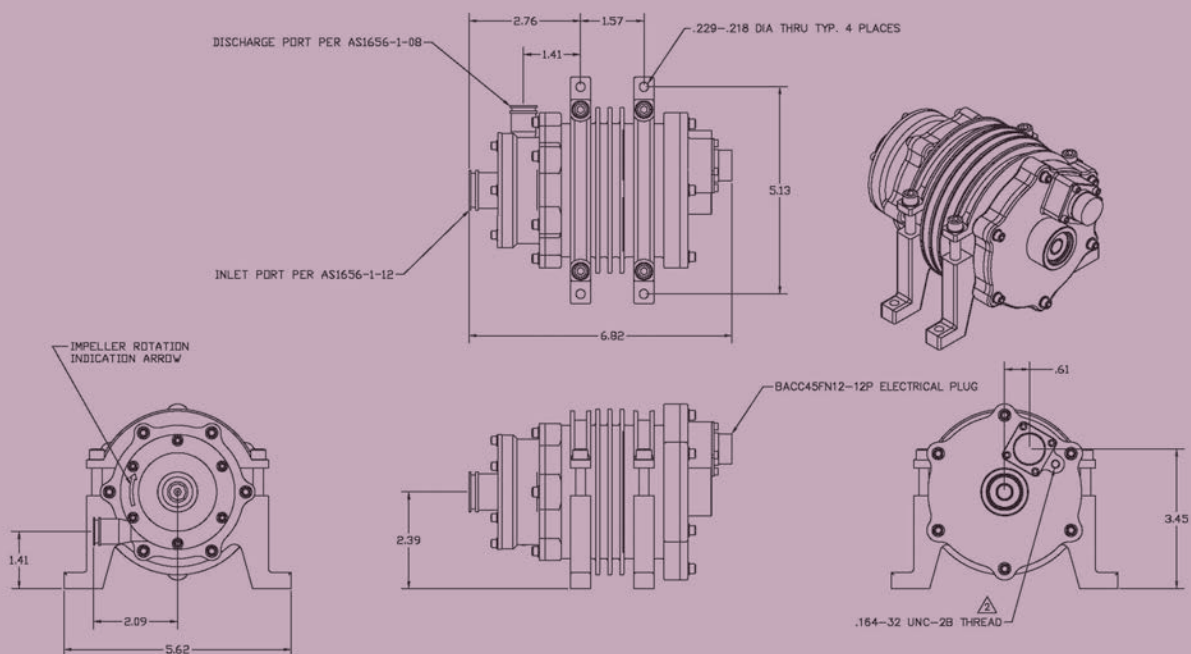
# Potable Water Pumps

## Features

- AC Induction motor driven centrifugal pump
- Fully qualified for commercial aircraft service - Boeing 777, 747-8 and 747-400
- 115 VAC, 3-phase, 400 Hz input power
- Water cooled motor - no supplemental cooling is needed
- Water lubricated bearings - no supplemental lubrication is needed
- Direct-drive between the motor and the pump's impeller
- No shaft seal is needed or used
- Qualified for a minimum of 15,000 hours of operation with hard water
- Capable of more than 1,000 hours of operation without cooling or lubrication (Dry Running)
- Versions available for dedicated hot water circulation
- Versions available for operation with "wild frequency" input power
- Versions available for operation with 28 VDC input power (brushless DC motor)

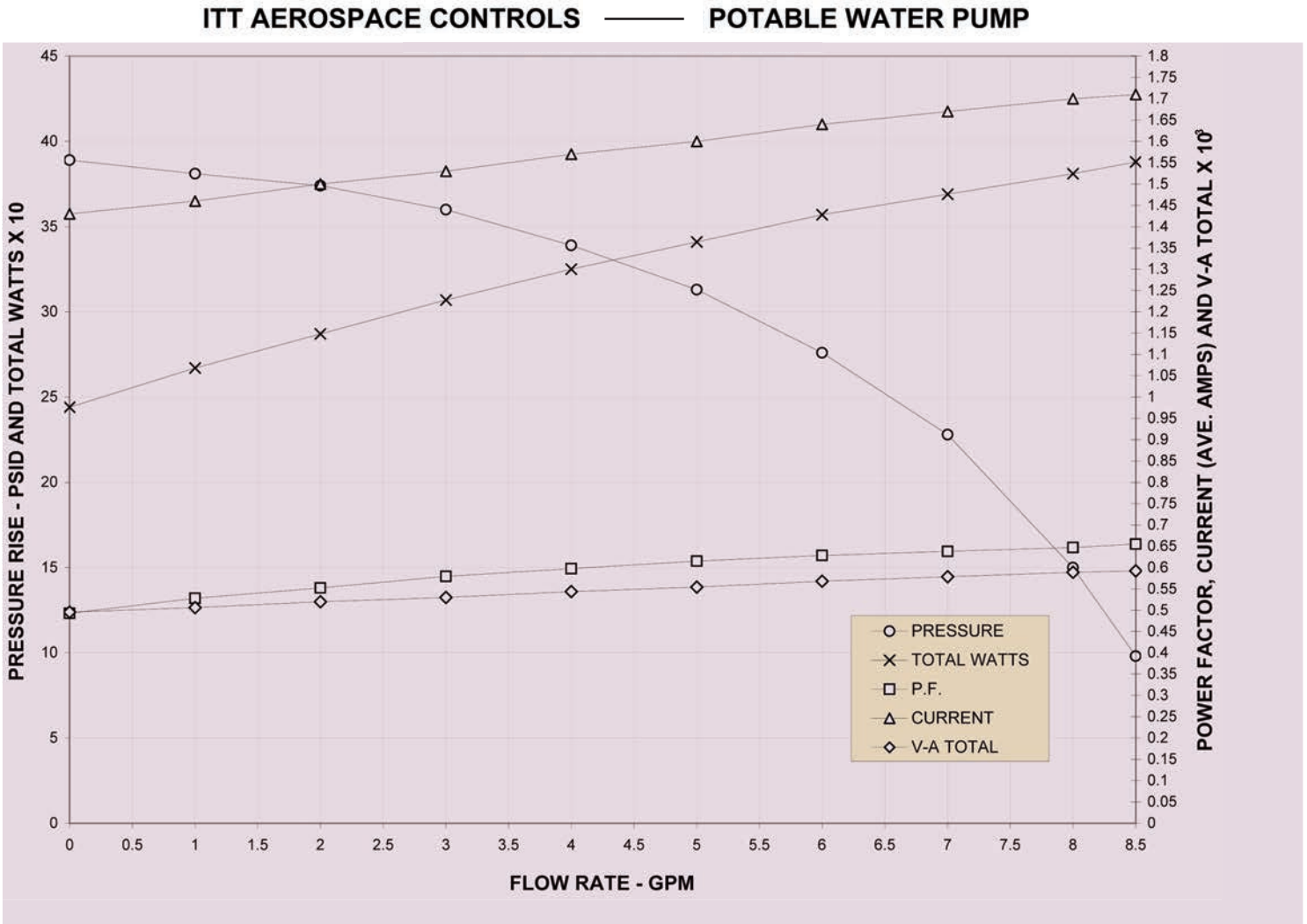


## Basic Dimensions



# Potable Water Pumps

## Nominal Performance



ENGINEERED FOR LIFE

ITT Aerospace Controls | 28150 Industry Drive | Valencia, CA 91355, USA  
 Phone: 661-295-4000 | Fax: 661-294-1750  
 Email: sales.aerospace@itt.com | Web: www.ittaerospace.com