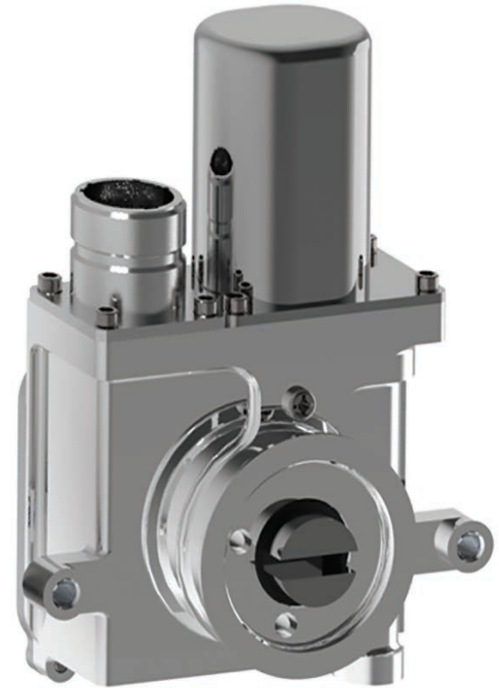


Compact Actuator

Key Features

- Compact size and low weight
- V-Band mounting
- Manual override feature
- 90° rotation
- Separate electro-mechanical position and indication switches
- Non-backdrivable gear train
- Environmentally Sealed
- Endurance Life 100,000 cycles
- EMI/EMC filtering



Product Overview

ITT Aerospace Controls' Compact Actuator is a non-backdrivable rotary actuator using a permanent magnet DC motor with separate electro-mechanical switches for position limit and indication at each end of travel, eliminating the possibility of a latent failure.

Solid state circuitry is used in lieu of a conventional electro-mechanical directional control relay, resulting in a more reliable unit. The actuator electrically isolates components contained within the environmentally sealed enclosure to eliminate the possibility of electrical energy being passed through these components resulting in safer operation.



ITT

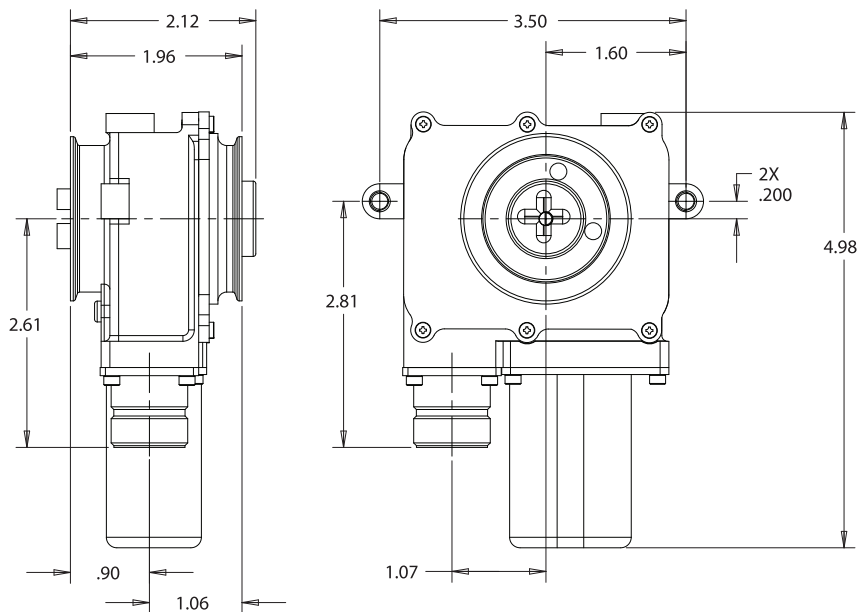
ENGINEERED FOR LIFE

ITT Aerospace Controls | 28150 Industry Drive | Valencia, CA 91355, USA
Phone: 661-295-4000 | Fax: 661-294-1750
Email: sales.aerospace@itt.com | Web: www.ittaerospace.com

Specifications

Design Actuator Type	Brushless PMDC, Compact Actuator
Mounting Interface	V-Band Mount
Electrical Connector	D38999/21YC8PN
Supply Voltage	28 VDC Nominal, 18 to 32.8 VDC Range
Current Draw Inrush	9 Amps Maximum
Running	0.8 Amps
Position Control and Indication	2x Position and 2x Indication Micro Switches
Shaft Rotation	90 degrees
Speed	2.5 to 4 seconds at 28 VDC and 25 in-lbs.(2.8 Nm) 2.5 to 12 seconds over temperature and voltage range
Rated Torque	25 in-lbs. (2.8 Nm)
Stall Torque	80 in-lbs. (9.0 Nm)
Ambient Temperature	-67°F to +175°F (-55°C to +79°C)
Enclosure	14 psig (101.4 kPa) environmentally sealed
Weight	1.33 lbs. (0.6 Kg) Maximum
Bonding Resistance	0.8 m Ω from V-Band mounting surface to bonding lug surface
Duty Cycle	Intermittent

Product Dimensions



Note: All dimensions are in inches and are for reference only.