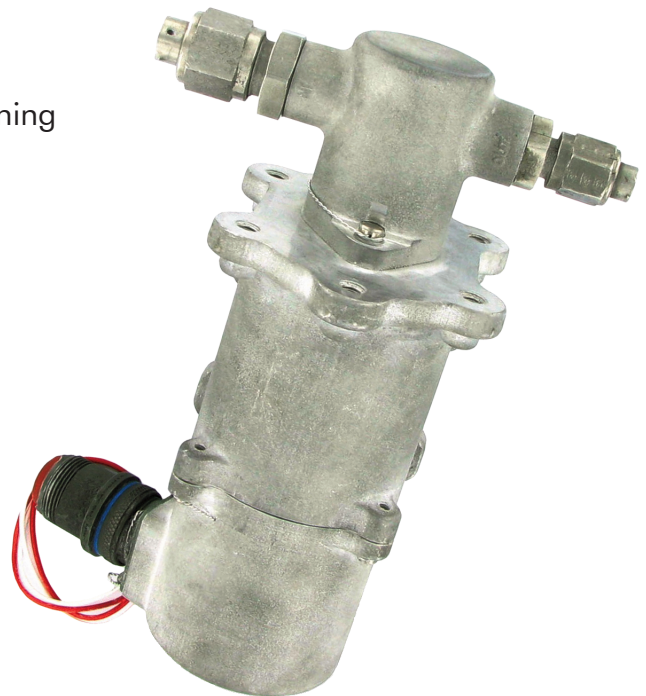


Scavenge Pumps

ITT Aerospace Controls' Scavenge Pump has fuel lubricated bearings - no supplemental lubrication is needed and is SFAR 88 Compliant.

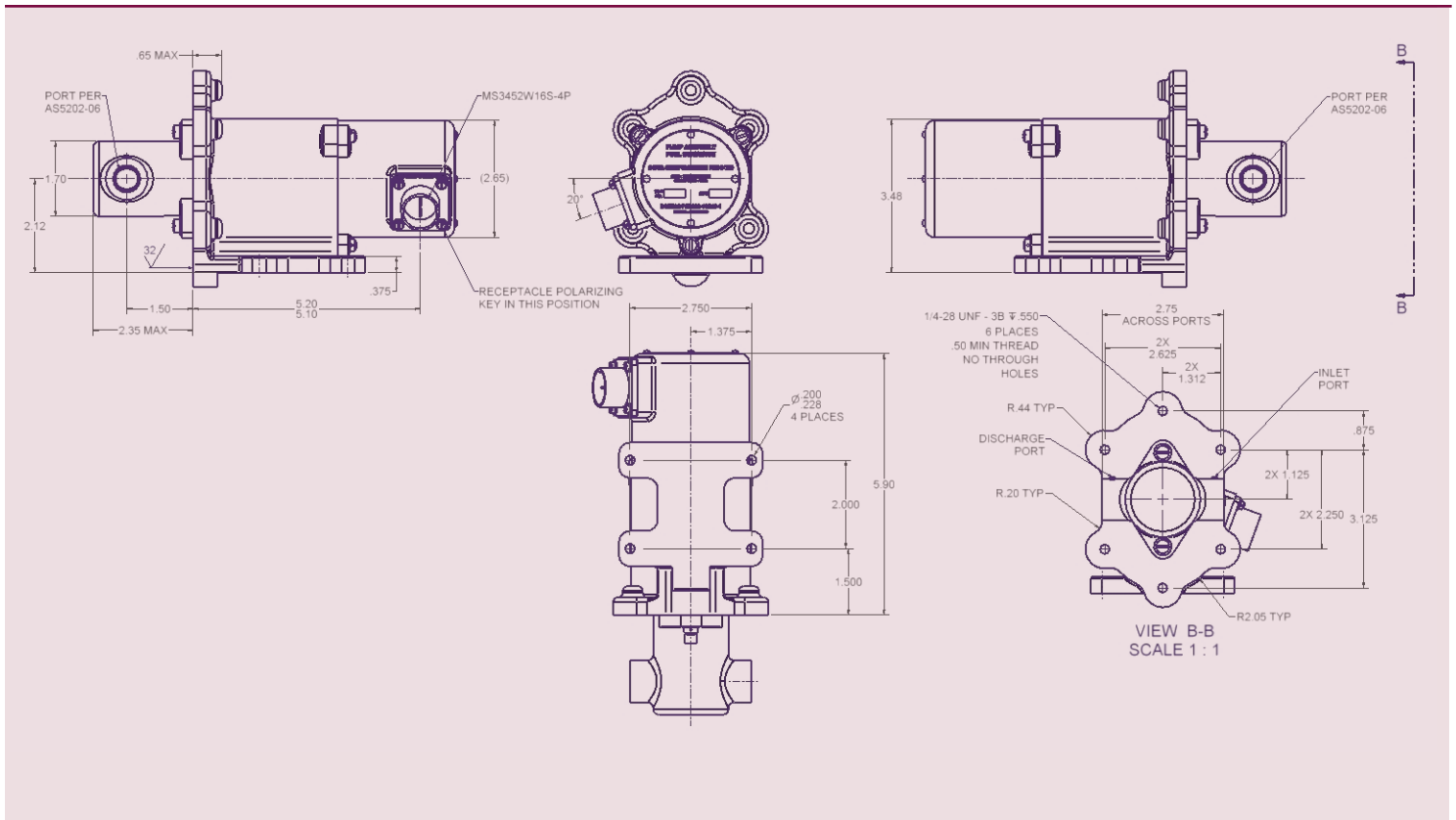
Features

- SFAR 88 Compliant
- AC Induction motor driven positive displacement pump
- Fully qualified for aircraft service
- 115 VAC, single-phase, 400 Hz input power
(3-phase input power option available)
- Fuel cooled motor – no supplemental cooling is needed
- Fuel lubricated bearings – no supplemental lubrication is needed
- Direct-drive between the motor and the pump's impeller – no shaft seal
- Explosion suppression housing
(meets NAVAIR HDBK 06-5-504)
- Qualified for a minimum of 1,000 hours of Dry Running
(driving motor and pump)
- Non-resettable thermal fuses provide a last-defense safety shutdown
- Self-priming with a suction lift of 10-feet minimum



Scavenge Pumps

Basic Dimensions



ENGINEERED FOR LIFE

ITT Aerospace Controls | 28150 Industry Drive | Valencia, CA 91355, USA
Phone: 661-295-4000 | Fax: 661-294-1750
Email: sales.aerospace@itt.com | Web: www.ittaerospace.com

AER0932_30 12/14

Specifications and dimensions subject to change.