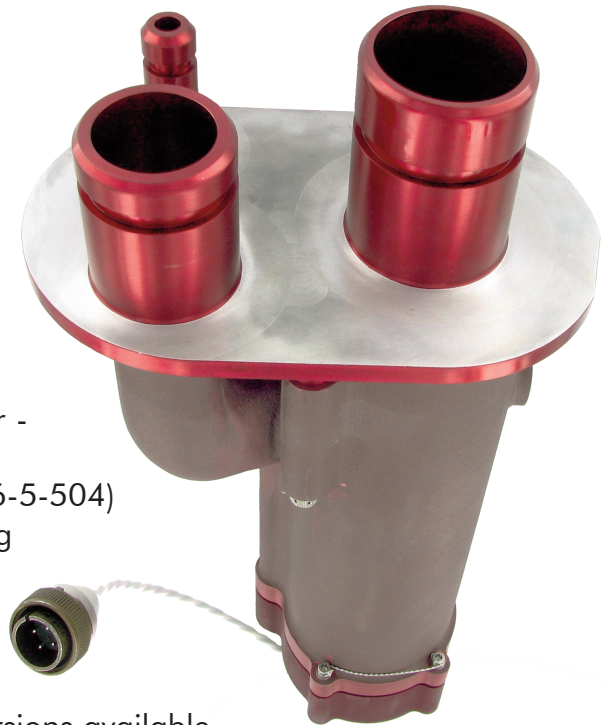


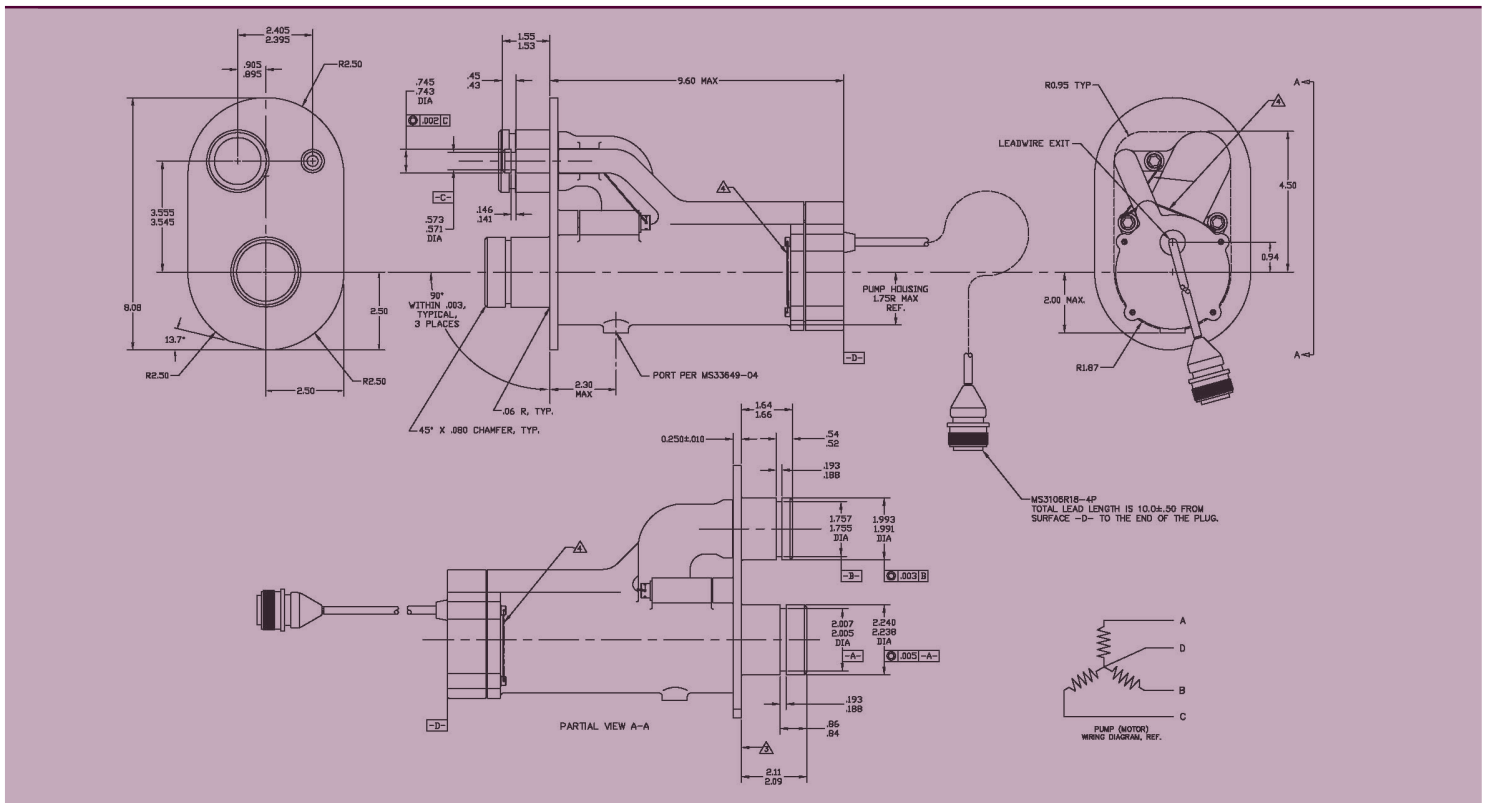
# Fuel Override Pumps

## Features

- SFAR 88 Compliant
- AC Induction motor driven centrifugal pump
- Self priming capabilities offered in selected pumps
- Fully qualified for aircraft service
- 115 VAC, 3-phase, 400 Hz input power
- Fuel cooled motor - no supplemental cooling is needed
- Fuel lubricated bearings - no supplemental lubrication is needed
- Direct-drive between the motor and the pump's impeller - no shaft seal
- Explosion suppression housing (meets NAVAIR HDBK 06-5-504)
- Qualified for a minimum of 1,000 hours of Dry Running at altitude pressures up to 60,000 feet and 160°F - verified by repeated tests
- Non-resettable thermal fuses provide a last-defense safety shutdown
- Bottom tank mounted or through-the-tank mounting versions available



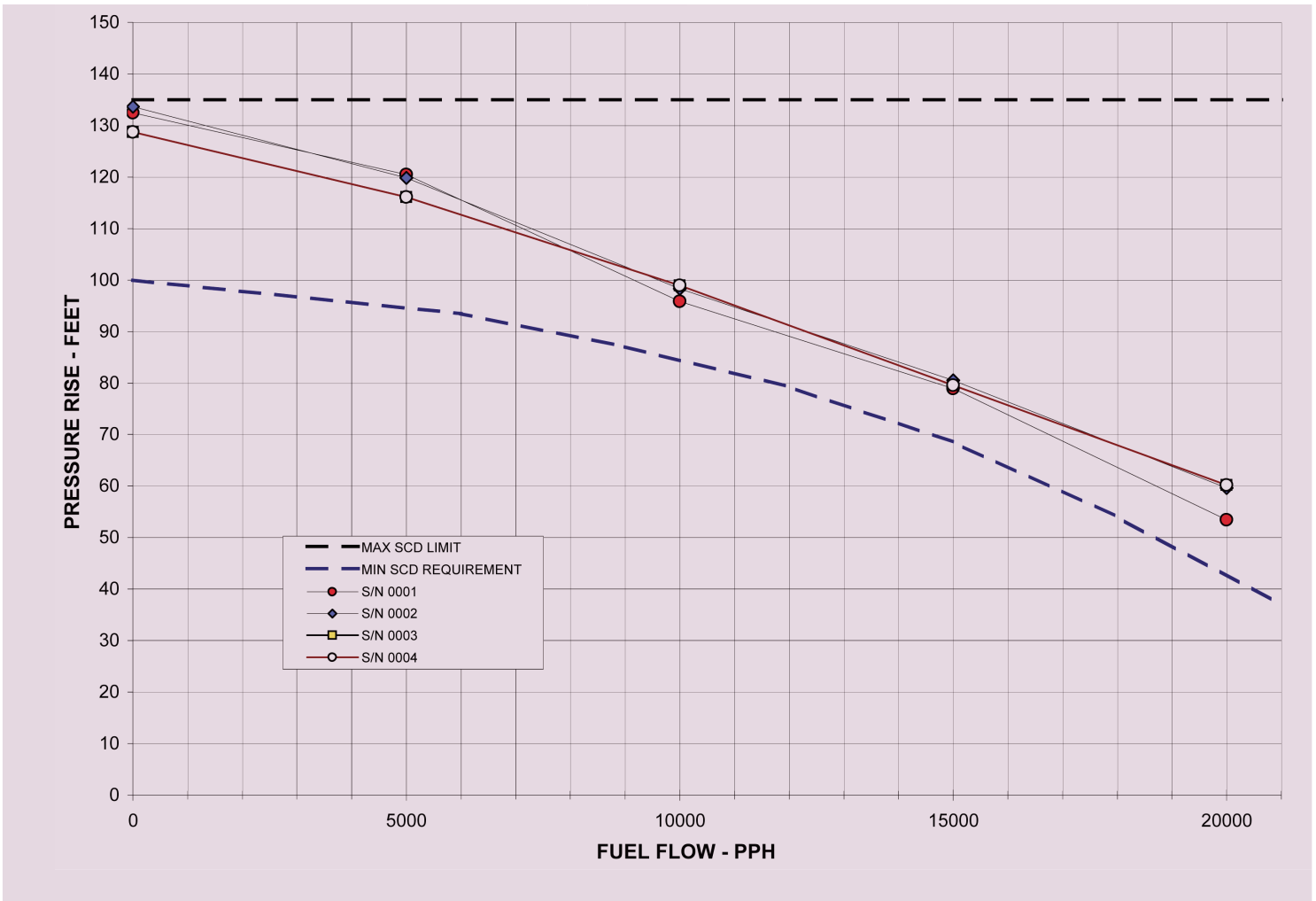
## Basic Dimensions



# Fuel Override Pumps

## Nominal Performance

ITT AEROSPACE CONTROLS ——— OVERRIDE PUMP PERFORMANCE



ENGINEERED FOR LIFE

ITT Aerospace Controls | 28150 Industry Drive | Valencia, CA 91355, USA  
Phone: 661-295-4000 | Fax: 661-294-1750  
Email: sales.aerospace@itt.com | Web: www.ittaerospace.com

AER0932\_30 12/14

Specifications and dimensions subject to change.